

4

3

2

1

THESE DRAWINGS AND SPECIFICATIONS ARE THE PROPERTY OF JBL INCORPORATED.
THEY ARE ISSUED IN STRICT CONFIDENCE AND SHALL NOT BE REPRODUCED OR USED
AS THE BASIS FOR MANUFACTURE OR APPARATUS WITHOUT WRITTEN PERMISSION.

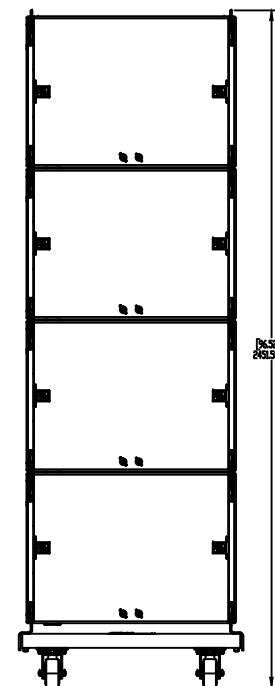
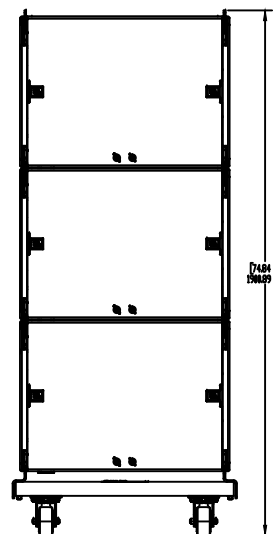
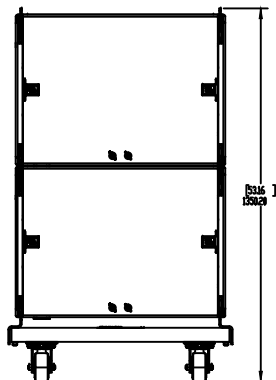
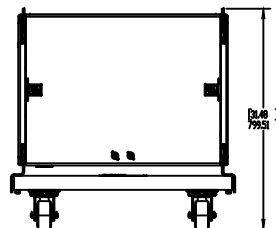
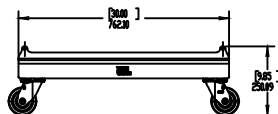
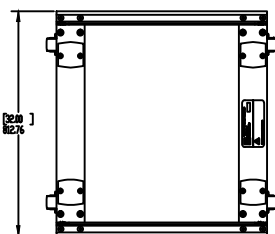
REVISIONS			
LTR	DESCRIPTION	DRAFT	DATE
A	RELEASE TO MARKETING	EH	10/4/2018

D

C

B

A



D

C

B

A

1. COMPONENTS: N/A
2. INPUT CONNECTORS: N/A
3. GRILL: N/A
4. MATERIALS: ALUMINUM, STEEL, BIRCH WOOD
5. FINISH: BLACK POWDER COAT
6. SUSPENSION POINTS: N/A
7. WEIGHT: 22KG (49LBS)

☐ CENTER OF GRAVITY (CG) ⚙ :N/A

NOTES: (UNLESS OTHERWISE SPECIFIED)

TOLERANCES

(UNLESS OTHERWISE SPECIFIED)

XXX ± .063 INCH

XX ± .125 INCH

ANGULAR TOLERANCE OF 0°±30°

FRACTIONAL DIMENSIONS ±1/32

* DIMENSIONS ARE MM (INCHES)

* ALL DIMENSIONS ARE FINISHED DIMENSIONS

* DO NOT SCALE DRAWING



JBL PROFESSIONAL
A Harman International Company
Northridge, California 91329 U.S.A.

TITLE		
CUSTOMER DRAWING, VT-X-B18-VT		
SIZE	DRAWING NO.	REV
A	1000338088	A
SCALE	SHEET 1 OF 1	
NTS		

4

3

2

1

